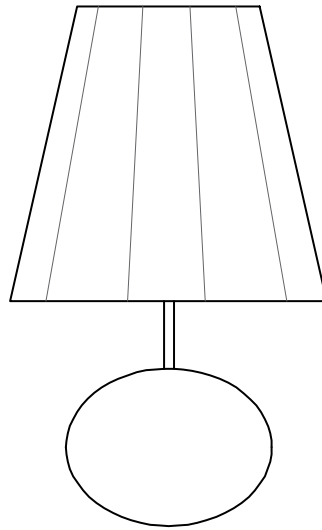


COCO WALL LAMP



HOW TO INSTALL YOUR NEW LIGHT

Please verify that all components are included before installation.

If anything is missing, please contact us at:

customer@studioebur.com
www.studioebur.com

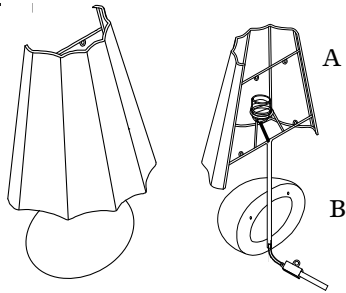
CAUTION

Risk of fire or electric shock. Turn off power at the circuit breaker before installation. Installation must be performed by a licensed electrician. Do not exceed specified wattage. Use only specified bulb type.

COCO WALL LAMP

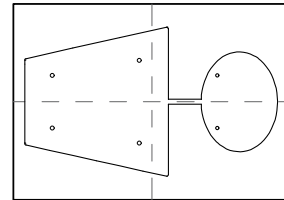
PART A AND B

Wall lamp delivered in two parts:
A: Lampshade / B: Glazed stoneware base



PART C

Paper template



PART D

Dowels x6



PART E

L-hooks x2



PART F

Screws x4



PART H

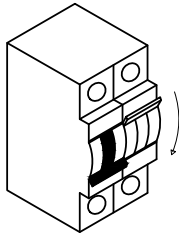
Bulb E27 (not provided)



COCO WALL LAMP

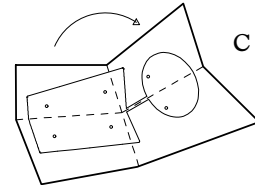
STEP 01

Turn off electrical power at the main fuse box or electrical panel before beginning installation.



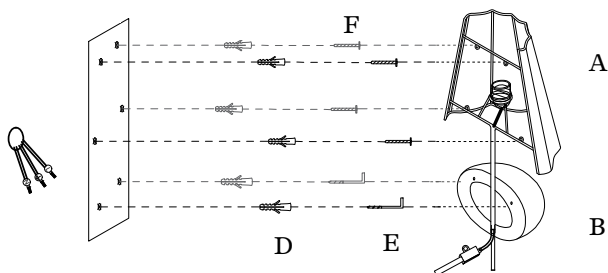
STEP 02

Unfold the template (C) then place it on the wall to mark the drilling points



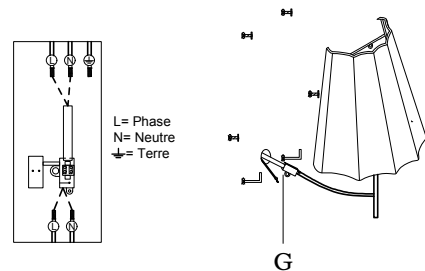
STEP 03

Drill the holes in the wall then install the hooks (E) and screws (F).



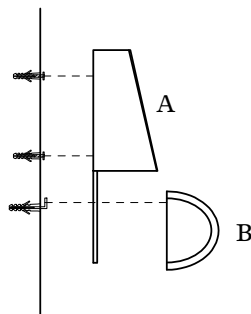
STEP 04

Connect the wall wires to the corresponding wires of the lampshade (Part A) using the connection box



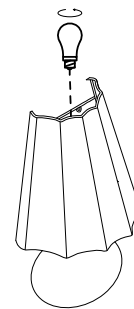
STEP 05

Mount the wall lamp onto the installed hooks.



STEP 06

Screw the bulb into the socket.



COCO WALL LAMP

HOW TO CLEAN YOUR LAMP

Turn off power before cleaning. Clean with a soft, dry cloth only. Do not use water or harsh cleaning products.

GOOD TO KNOW

For dimming, use a dimmable bulb with a compatible dimmer.

SOLD SEPARATELY

Light bulb sold separately.

EBUR recommends the E27 LED light bulb (max. 10W) with a warm color temperature of up to 2700 K.

IMPORTANT NOTICE

This product complies with applicable European safety standards. Installation should be carried out by a qualified electrician.

END OF LIFE OF THE PRODUCT



This product must not be disposed of with household waste. Please dispose of it in accordance with local regulations and recycling requirements.